



# Indiana Access to Recreation Community Foundation Grant Proposal

## Applicant Information:

Community Foundation of Bloomington and Monroe County  
101 West Kirkwood Ave., Suite 321  
Bloomington, In 47404  
Contact: Shari Woodbury, President and CEO  
Phone: 812-333-9016  
Email: Shari Woodbury [cfdirector@insightbb.com]  
Website: www.communityfoundation.ws

## Project Partners:

|   |  |
|---|--|
| Monroe County Parks and Recreation<br>290 West 7 <sup>th</sup> Street, Curry Building<br>Bloomington, In 47404<br>812-349-2800<br>Contact: Kelli Witmer, Assistant<br>Administrator | Options for Better Living<br>200 East Winslow<br>Bloomington, In 47402<br>812-332-9615<br>Contact: Susan Rinne, Executive Director |
|---|--|

## Project Description:

Monroe County Access to Recreation: Karst Farm Playscape

A unique partnership in Monroe County is forming to create a universally accessible recreational area within Monroe County. The Community Foundation of Bloomington and Monroe County, Options, the Monroe County Commissioners, Monroe County Parks and Recreation, and people with disabilities and their families are collaborating to provide resources missing from the greater Monroe County region – truly inclusive family recreation. The goals of the project are simple:

- Design and begin building a multiphase, accessible recreation area at Karst Farm Park, the ***Karst Farm Playscape.***
- Build awareness of and commitment to accessible recreation in Monroe County.
- Providing ongoing funding for accessible recreation projects in Monroe County.

## Fund Request:

| Area               | Match required   | Foundation Request | Total            |
|--------------------|------------------|--------------------|------------------|
| Recreation Project | 200,000          | 200,000            | 400,000          |
| Convening          |                  | 26,000             | 26,000           |
| Administration     |                  | 66,000             | 66,000           |
| Endowment          | 134,000          | 134,000            | 268,000          |
| <b>Total</b>       | <b>\$334,000</b> | <b>\$426,000</b>   | <b>\$760,000</b> |

**WK Kellogg Foundation Grant**  
**Monroe County Access to Recreation: Karst Farm Playscape Proposal Narrative**

**Abstract**

A unique partnership in Monroe County is forming to create a universally accessible recreational area within Monroe County. The Community Foundation of Bloomington and Monroe County, Options, the Monroe County Commissioners, Monroe County Parks and Recreation, and people with disabilities and their families are collaborating to provide resources missing from the greater Monroe County region – truly inclusive family recreation. The goals of the project are simple:

- Design and begin building a multiphase, accessible recreation area at Karst Farm Park, the ***Karst Farm Playscape***.
- Build awareness of and commitment to accessible recreation in Monroe County.
- Providing ongoing funding for accessible recreation projects in Monroe County.

Monroe County offers many recreational opportunities, but one need remains unmet: the chance for children with disabilities to laugh and play alongside children without disabilities. This project will give hundreds of children what we have not yet, despite our best efforts, been able to provide in Monroe County – a place to gather and interact in a casual environment. The ***Karst Farm Playscape*** would provide a desperately needed recreational and social outlet for citizens of all abilities and ages.

We want our community to have a resource where there are accessible and inclusive options for recreation. The purpose is not just to create an accessible play area but an inclusive one, a space for physical expression and social interaction to benefit the entire community. This project is dedicated to all who want to play in an unrestricted environment.

***About the partners***

The ***Monroe County Parks and Recreation Department*** exists to provide quality parks, recreation and educational programs, promote appreciation of environmental and cultural resources, and preserve green space. Recreational services are provided in the areas of: youth, teen, adult, family, seniors, athletics, and special events. MCPR manages 385 acres of park land in Monroe County. It is under the guidance of a seven member park board, and is funded by the Monroe County Council and Commissioners. The department has a staff of 11 full time professional employees and approximately 50 part-time employees. Monroe County Parks and Recreation staff will provide the expertise in the areas of park design, landscape design/implementation, irrigation design/implementation, construction, playground installation, Playscape safety and emergency procedures and recreation programming for the W.K. Kellogg Foundation Grant.

***The Community Foundation of Bloomington and Monroe County*** has served the donors, non-profits and communities of Monroe County since 1990. It holds over 150 endowment funds, manages a portfolio of \$15 million, grants upwards of \$600,000 annually, and strives to champion local philanthropy and connect caring people with community needs. The Community Foundation has partnered effectively with other funders to support special project grants for Monroe County agencies; to offer our community an affordable housing loan fund; to convene community members around education, identify top local needs, and launch and sustain effective programs addressing those educational needs; and to award full-ride college scholarships to local high school students. Its diverse 19-member board and professional staff of 5 have recently undertaken several new philanthropic programs, including a capacity-building program for agencies and proactive granting for middle schoolers. The Access to Recreation Initiative falls squarely within the Foundation's mission and vision because of the opportunity to meet a local need and leverage multiple sources of funding for a specific project, raise awareness about that need through an inclusive process, and build and steward a permanent local fund for addressing that need. The Community Foundation is ready to lend its expertise in building and managing endowment, its credibility in endorsing and monitoring projects, and its leadership in rallying people together around an important issue.

**Options for Better Living** is a private, nonprofit organization that serves people with disabilities and their families. It has been in the business of providing services to people and families for over 25 years. The services include support to live, learn, work, and be an active member of the community. The Board of Options is comprised of people with disabilities, family members, and community leaders. The majority of the Board must be people who receive services, making Options a customer run organization. The agency provides expertise, resources, and support for this application because of its interest in ensuring everyone has a place to have fun, especially in our local parks and recreation centers.

## **I. Recreation Project**

Monroe County is located in south central Indiana about 50 miles south of Indianapolis. The county seat is in Bloomington, which is home to Indiana University (IU). The county's population is approximately 120,000, of which 37,000 are IU students. The community is comprised of many diverse ethnic groups, artists, musicians, and local Hoosiers.

Karst Farm Park represents the best Monroe County has to offer – it is covered with trees, rolling hills, and natural limestone features. Karst landscapes are characterized by caves, sinkholes and “sinking” streams, and large springs. Many of the world's most productive aquifers are found in karst terrains and rare, specially adapted animals live in caves. The park is already a gathering spot for the community where regional soccer tournaments are held, families enjoy picnics and concerts feature local musicians. Karst Farm Park (circa 1969) is a 120 acre area for which the Monroe County Commissioners holds a marketable title that states the parcel shall be a public park in perpetuity. The park has approximately 200,000 annual visitors and is open year around free of charge to the public. It is free of contaminants, not in a floodplain, and is landscaped with the utmost care. The land being reserved for the **Karst Farm Playscape** project is surrounded by a 30 acre accessible park expansion. The expansion master plan includes athletic fields, a dog park, pond, restrooms, music venue, parking, and a restored pre-Civil War barn. The expansion is approximately 50% complete.

Karst Farm will provide the backdrop for the Playscape...a multiphase, accessible recreation area designed and built with the generous support of the W.K. Kellogg Foundation and community partners.

### **A. Project Design**

#### **1. Name and describe the universal recreation project.**

Because of the project's initial focus, its name is the **Monroe County Access to Recreation: Karst Farm Playscape**. For the past year a group of key stakeholders, the **Karst Farm Playscape** Steering Committee, have been working to identify key features of an accessible play facility for Karst Farm. Representatives of disability service providers, community leaders, Monroe County Parks and Recreation, people with disabilities and family members have defined elements of the **Karst Farm Playscape** which target several developmental areas. Their aim is to enhance the physical and mental development of every child who interacts within the **Karst Farm Playscape** and ensure adults who have disabilities can adequately supervise and play with their children. The result of their consultation is this proposal for a **Karst Farm Playscape**. The Steering Committee will continue its efforts overseeing the design and implementation of the Playscape described in detail below. They will also support the development of an endowment fund, managed by the Community Foundation of Bloomington and Monroe County, which will assist in maintaining the playscape while providing support to enhance access to ALL Monroe County recreation facilities.

The **Karst Farm Playscape**'s recreational experiences will be guided by *universally accessible* standards that go beyond ADA guidelines to design inclusive recreation for people of ALL abilities.

Each phase of the project is outlined below. Since funds are limited, we are requesting that the WK Kellogg Foundation Grant support only the Phase I components. In addition, grant funds and local contributions will assist with the continued development of the **Karst Farm Playscape**. As part of the project the **Karst Farm Playscape** Steering Committee will outline plans for ALL phases. The fundraising strategies devised and put in place will enable

the committee to generate dollars in the future, both for the endowment and for the remaining **Playscape** phases. Monroe County Parks and Recreation will then be able to build the phases into its ongoing planning to expedite their completion. County financial resources are limited, thus each capital project phase will be built when funds become available. The county will also prioritize maintenance and upkeep of current and future facilities in its funding decisions.

| <b>Karst Farm Playscape Phases</b>   |             |                        |
|--|-------------|------------------------|
|  | <b>Size</b> | <b>Completion Date</b> |
| <b>Phase I</b>   |             |                        |
| <ul style="list-style-type: none"> <li>▪ Water Adventure Sprayground</li> <li>▪ Indy Car Race Experience</li> <li>▪ Patriot Spot (Flag Pole &amp; the National Anthem)</li> <li>▪ Playground Center Stage (5- 12 year olds)</li> <li>▪ Sand Lot</li> <li>▪ Hoosier Tot Lot (2-5 year olds)</li> <li>▪ Family Shelter House, picnic tables, &amp; grills</li> </ul> | 1/2 acre    | March 2009             |
| <b>Phase II</b>  |             |                        |
| <ul style="list-style-type: none"> <li>▪ Little 500 Bike Rodeo</li> <li>▪ Nature Sensory Area</li> <li>▪ Basketball for All</li> <li>▪ The Sound Experience</li> <li>▪ Shelter house</li> </ul>  | 1/2 acre    | 2010                   |
| <b>Phase III</b>   |             |                        |
| <ul style="list-style-type: none"> <li>▪ Year-round Facility</li> </ul>  | 2/3 acre    | 2011                   |

The Steering Committee chose Phase I components based on input from people with disabilities and their families and because of the creative and unique recreational options and opportunities that they offered. Based on the experiences of the Monroe County Parks and Recreation Department, these are the most popular recreational experiences in public parks. Please see map below. Through consultation with experts on Monroe County Parks and Recreation staff and consultation with the National Center on Accessibility and Indiana University, all phases will support inclusive universal access to recreation for people of all abilities. The map of the Karst Farm Park Area, pictures of the area, and a conceptual drawing of the Playscape are included as Attachment A

The types of activities and specific project play elements are based on the research efforts of the project steering committee. These principles will ensure activities are not only fun but challenging. Unique and creative ways to access all of the features has been incorporated into the design of this project and all the elements of the Karst Farm Park renovations. With the **Karst Farm Playscape** we hope to provide:

- Dizzying activities for physical stimulus
- Exploratory activities for cognitive stimulus
- Dramatic activities for imaginative stimulus
- Interactive activities for social/emotional stimulus
- Practice activities for developmental stimulus
- Sensory cues for sensory stimulus
- Passive resting for meditative stimulus

*(Source: Keith Christensen, "When Child's Play is Anything but to Help Children with Disabilities, Design by Types of Activities, Not Types of Equipment")*

The front access to the **Karst Farm Playscape** will be inviting, informative, and beautifully landscaped giving the park user a welcoming, friendly feeling. All accessible parking spaces will be located in front of the entry to the **Karst Farm Playscape** and marked with upright signs that will designate the area and indicate the width of the parking spot. The spaces will be properly marked on a hard surface with adjacent accessible isles. The isles will link up to accessible routes into the playscape.

All access paths to and from each recreational experience will go above and beyond the ADA minimums with wide paths and large maneuvering space. All access paths will integrate natural features along each route to give the park user a natural outdoor experience. Each route will be lighted by fiber optic cable located near the ground so as not to produce up light pollution.

Entry into the Water Adventure Sprayground will be accessible from multiple access paths leading to other playscape features. Once at the water feature, the boundaries will be marked by painted, textured concrete. Surfacing will be non-slip and unitary. At the entry there will be a dry area for transfer to the water wheelchairs and to put your personal belongings away.

Access into the Indy Car Race Experience will provide accommodations for all users. The size and shape of the accessible seat will be appropriate to accommodate wide turning ranges. The pit crew area will have varying height seats to accessible to the most users possible. Each chair will have its own transfer area with grab bars and back support. The Flag Pole & the National Anthem area will be surrounded by a wide open play area as well as seating and shade areas. Audio, visual and Braille versions of the anthem will be provided. Benches will have arm rests and be of multiple heights to assist transfers.

Access into the Playground Center Stage for 5- 12 year olds and the Hoosier Tot Lot for 2-5 year olds will be provided by multiple access paths. Structures will accommodate both elevated and ground level play and be integrated on accessible routes. Special attention will be paid to create entry areas that incorporate a unique feeling and theme. Since we have the area needed, we will provide ramp access with a goal of 100% of elevated play components but a minimum of 70%.

The sand lot will have multiple options for access. We will create a zero depth entry level (similar to a zero depth pool). People will also be able to use a transfer station to enter the sand lot. Grab bars will be strategically located at multiple heights on the sand lot sides for better maneuverability. The sand lot will also have multiple height sand tables and a steeped side to provide access for those who do not wish to completely emerge in the sand lot.

The Family Shelter House will have at least two access routes, which will be barrier free and allow multiple persons in assistive devices to enter simultaneously.

Karst Farm Park is a safe place to bring your family or to go for a jog. Safety considerations in each recreational experience along with a general safety plan for the entire **Karst Farm Playscape** will provide users with an increased sense of security. Visible and hidden security cameras will be used to discourage vandalism and to be used as a tool against child predators. The **Karst Farm Playscape** experience will be equipped with a public address system that will be used in emergencies and by the park staff for programming purposes. The **Karst Farm Playscape** is located only 800 feet from a severe weather/tornado siren. The address system could be used to warn the public about approaching severe weather. Along with a verbal warning, a flashing light will alert people who may be hearing impaired of the danger. Information about the security measures and emergency procedures for the **Karst Farm Playscape** will be available at the front entry. A reserve Monroe County Deputy resides in the park to provide security and the park serves as the home base for the maintenance staff. As a result, Karst Farm Park has very low incidents of vandalism. Normally the park gates are locked at sunset unless there are athletic or special events occurring.

## 2. Identify existing barriers.

Since the **Karst Farm Playscape** is in the design phase, our goal is to have no barriers to the recreation experience or in each recreational environment. Currently each facility in the park expansion has been carefully designed to provide each park user of all abilities the opportunity to relax and have fun.

The parks and recreation department has been working to correct many of the accessibility issues at Karst Farm Park that were identified in the MCPR Master Plan. Sidewalks have been expanded and now connect the shelters,

playgrounds and rest rooms. Trails have been compacted and de-vegetated to improve the quality of the surfaces. Additional concrete work has been done to increase accessibility to shelters. Some features in the remaining 90 acres of Karst Farm Park do have some accessibility issues. For example, the older playgrounds in the park have a wood fiber surface which can cause assistance devices to sink into the surface. These playground surfaces should be replaced by a level and soft surface such as, or similar to, poured-in- place or playground synthetic turf. The play structures are not accessible by ramps. Entry into the playground pods are not barrier free. Transfer points are limited and many do not provide enough open floor space. Picnic tables at the shelters are not at multiple heights to accommodate different needs. This project will intensify the need to correct this and other concerns. Through the use of endowment income, this project will enable the partners both to maintain the ***Karst Farm Playscape*** and to correct these current problems.

County-wide, many small community playgrounds are in desperate need of an accessibility assessment and universally designed playground equipment. Some of these playgrounds do not meet the minimum requirements of the American's with Disabilities Act. Karst Farm Park's ***Playscape*** will serve as an example of universal design to educate other local park providers.

Outside of being the home of Indiana University, Monroe County is known for having the largest lake in the state, the 10,750 acre Lake Monroe. The management and control of Lake Monroe is by the Indiana Department of Natural Resources. The access to water features at Lake Monroe is limited. There is also limited access to the many smaller water bodies like lakes, ponds, and streams. The Sprayground at Karst Farm Park will provide much needed water recreation options for people with disabilities.

In addition, we feel that because of its proximity, the ***Karst Farm Playscape*** may also be used by the National Center on Accessibility at Indiana University for national workshop demonstrations on universal design and recreational inclusion. This should further enhance access to recreation in other parts of our state and in other parts of the country. Through this and other dissemination activities outlined in the endowment section, the project will create awareness of, the need for, and benefits of totally accessible recreation.

### **3. Universally accessible design features.**

The proposed design of the project outlined here will be informed by the convening activities conducted during the project design phase. Phases II and III will be particularly user driven. The public input methods will have a specific focus on gathering ideas and information from people with disabilities and their families as well as professionals in recreation and accessibility.

Project staff and the steering committee will work to ensure that all play experiences are carefully designed and consider access for people who have a variety of disabilities. The challenge will continually be to exceed ADA requirements in all categories. We understand ADA to be minimums and NOT the ideal. Special attention will be paid to clear width, head clearance, clear space, maneuvering, surfaces, slopes, transfers, knee clearance, reach range, one handed operation, and viewing. Considerations about physical user size will be made for each recreational experience.

The Water Adventure Sprayground will be the thrilling centerpiece to the ***Karst Farm Playscape***. It will be themed to reflect the natural Karst landscape in our region with water features evoking lakes, limestone quarries, creeks, springs, ponds, waterfalls and caves. Layers of limestone, sandstone, and shale over 400 feet thick were built up by ancient seas that once covered this part of Indiana. Aquatic fossils and geodes populate these layers and will be incorporated into the unique design. Rare, specially adapted animals known to live in caves like the endangered Indiana Bat will provide inspiration for play elements. Both natural and synthetic rock features will provide shade, visual stimulation and multiple textural and sensory experiences.

A range of water experiences will be provided at the Sprayground- from light mistings to total drenching. Potable city water will be used for the of the spray nozzles and then directed to the park's pond and recycled for use on the athletic fields. The water playground will be set on automatic timers and be foot or wheel activated to conserve water. These activation devices will also allow people using supportive devices to initiate interaction independently.

Careful attention will be given to the placement of multiple height grab bars throughout the spray park. The spray park will have shade devices located above the non-slip surface well above the required 80 inch minimum vertical clearance of ADA guidelines. There will be ground level, mid level and overhead features to the Sprayground to ensure a range of inclusive experiences. Moving and loose components will add to the options for water play. Surrounding the Sprayground will be multiple height transfer benches and picnic tables for supervision and resting.

The Water Adventure Sprayground will provide all users, of all abilities, young and old, a truly unique shared experience. The park user will enter a world where children or adults who use assisted devices can participate in a wet, fun, and social setting. If an assistance device is needed, there is no worry about getting it wet, we will provide water wheelchairs. Patrons can park their personal assistance device on a slip resistant surface and use our extra large transfer stations equipped with grab bars at multiple heights to join in the water fun. Different sizes of water wheelchairs will be available on site everyday. The water wheelchairs will be designed to be operated by the user alone or with assistance from a buddy. Nothing is more fun than getting wet on a hot summer day with your friends.

The water wheelchairs will be made of a durable and strong schedule 40 PVC pipe with good traction tires. The design of these water assisted devices will go through a rigorous development process to ensure a safe and dependable product. Stone Belt Arc, Inc is interested in a partnership with Monroe County Parks and Recreation Department in the development and production of these water assistance devices. Stone Belt is a nonprofit organization that provides education and support for children and adults with disabilities. Stone Belt Arc services include manufacturing, employment, child development, life skills training, family, and psychological services. If the water wheelchairs, walkers, and canes are sold nationally, then a percentage of the profit could be directed to the *Monroe County Access to Recreation Endowment Fund*.

The Indy Car Race Experience is sure to be a hit with the children and the inner child in every adult. Indiana is known internationally for racing and countless race fans populate the community. This play experience will be composed of a larger than life-sized Indy car located on a painted checkered surface. Local artisans and Stone Belt Arc will be involved in the design and construction of the Indy car. The community will also be invited to help create small sculptural car models that will surround the large Indy Car and provide the users with other cars to "race." One side of the car will be cut out to provide proper access (for wheelchair users) and maneuverability for two buddies to play as either the driver or a passenger. Directed sound technology will be used to simulate the sound of an Indy car racing around the track. The car will be outfitted with foot pedals and hand levers as you would find in vehicles with such assisted driving devices. If that is not enough fun, we are also making an area for the pit crew to get involved. The pit crew area will be outfitted with chairs that produce a low frequency when sat on. The low frequency simulates the vibration that you would feel at a real race.

You can't start a car race without an American flag or the playing of the National Anthem. Next to the Indy Car Experience will be the *Karst Farm Playscape's* flag pole that will proudly display the American flag. By pushing a large button, the National Anthem will begin playing. Children will sing along by reading the words or by using the Braille text at the site. Now it is time to "Start your Imaginations." Due to the proximity to the Crane Naval Surface Center, Karst Farm Park is also a resource to current and past military service members and veterans. Many returning veterans with disabilities have children and grandchildren that they want to play alongside. The regional AMVETS headquarters is adjacent to the park. The flag and anthem will provide a welcome and thank you to our veterans.

The Playground Center Stage for 5-12 year olds and the Hoosier Tot Lot for 2-5 year olds will be carefully designed from the ground up. Components will be chosen that encourage imagination, social interaction, cognitive and physical stimulus for all users. The playground units will go above and beyond the ADA standards. In order to provide a stable and safe surface we may use either a product similar to poured in place or artificial turf for playgrounds. This surfacing will be under all play components.

We will design the play equipment with the intention that every feature is useable for all children. When this is not possible, like experiences will be available for the park user. As mentioned previously, convening input will be key in the final design of the play area. Play components will be chosen to address all transfer points to, from, and on each play unit. Ramps and transfer points will be utilized to access play components. The project design will pay special

attention to best practices research and lesson learned from similar projects nationwide. Both of the play areas will be sure to have the following elements:

- Integrated ground level and elevated play on accessible routes to all play components
- Provide ramp and transfer point access to a minimum of 70% of elevated play components
- Organized game areas
- Swings of a variety of types and sizes for developmental levels
- Surfacing under all play components
- Appropriate reach ranges
- Sound elements
- Overhead equipment
- Gradual slopes
- Clear floor spaces
- Multiple height hand rails
- Play tables of multiple heights
- High/low play combinations
- Niche and resting areas
- Shade
- Supervision areas
- Space for role-playing and pretend games

The Hoosier Tot Lot will also have an attractive and safe fence surrounding the area. This will assist parents with preventing active children from wandering off. The area will also have swings with tot seats and saucers so families can swing together. Special considerations will be made to accommodate the unique developmental needs of children 2-5 years of age.

A carefully designed sand lot will be located near the play units. The sand feature will also simulate the naturalized ecological theme of the water feature. The sand lot will have a beach like area. A variety of textures and sights will surround the area through unique landscaping that will include limestone with fossil features. The sand lot will have multiple access points for varying degrees of immersion. This includes sand tables, stepped sides and seating. Loose toys will be provided to enhance manipulations opportunities. The area will have shade and relaxation spots.

The Family Shelter House will be strategically located to give adults a good visible view of the play components in order to supervise their children better. The shelter house will be constructed with large aisle ways to accommodate wheelchair users. These aisles will go around the picnic table rows, outside the shelter, and around the grills. The covered electrical outlets and grills will be installed at a multiple heights that are convenient for an adult wheelchair user. The grills will also be installed on a swivel pedestal in order to rotate 360 degrees. The picnic tables will have wheelchair access available from the middle and end to provide the park user with numerous seating options at multiple heights.

As indicated throughout the project description, the landscaping around and in the Karst Farm Playscape will reflect the unique ecosystems of our regions. Utilizing native plants and materials, the aesthetics and sensory stimulations of the Karst Farm Playscape will be carefully crafted to provide the maximum impact. It will include open areas with naturally found objects that allow children to control and manipulate the environment. This will be expanded upon in Phase II of the project as more nature areas are added. The Monroe County Parks and Recreation Department has an expert naturalist on staff whose services will be utilized for the project. More specific information about her qualifications and other project staff can be found in the administration section.

#### **4. Inclusive participation by people with and without disabilities.**

The *Karst Farm Playscape* will provide unprecedented accessibility to recreation for people of all ages and abilities in our community. Specific attention will be paid to the placing of play components to assure that no one part of the

play area is more or less accessible. The playscape will provide inclusive, structured play and open spaces which allow users to engage in free and spontaneous play.

The Water Adventure Spray Playground will give park users who use assistance devices an opportunity to have the freedom of a wet play experience. With the water wheelchairs, park users need not worry about damaging or getting their wheelchair wet. Now everyone can be included in a fun, highly socialized and “very wet” play setting. This will provide all park users an inclusive recreational experience. It will also provide those without disabilities to use the chairs to experience the Sprayground from their peers’ perspectives.

The Indy Car Race Experience with the playing of the National Anthem will provide every child an imaginative play experience. This activity truly integrates all users of all abilities. Children will learn to play together either as the passenger, driver or as a pit crew member. The directed sound of the Indy car and the low frequency pit seats will give every child of all abilities the chance to hear and feel the sensation of a race car. The transfer area for the pit crew chairs will give all users an equal opportunity to participate in the experience. The foot pedals and hand levers give children options of controlling their imaginative race car. The children will also be able to hear, read or use Braille to learn the National Anthem. To get into the spirit of the race experience, the Monroe County Parks and Recreation staff will program different special events in the ***Karst Farm Playscape*** the week of the Indianapolis 500.

The Playground Center Stage, Sand Lot, and the Hoosier Tot Lot will combine free play and imagination with physical activity for all children. Every child will be able to access every play component no matter if it is located on ground level or up one level. Children of all abilities will be able to play alongside each other and do what all kids do best, which is to “make up play scenarios.” This social interaction is an important part in every child’s mental and physical development. Social barriers are eliminated when playground designers eliminate the physical barriers.

The Family Shelter House provides what every family needs, and that is family time. A place to play, relax, eat, talk and to spend time with each other. The shelter house design will concentrate on creating a space that provides a tremendous amount of maneuverability and easy use of the picnic tables, electricity, and grills.

We will also promote inclusion by featuring images of people with disabilities in all advertisements and promotion of the park facilities.

Specific programming will be developed to increase the use and desirability of inclusive activities. Monroe County Parks and Recreation will continue to work with service providers to ensure the maximal use of the available facilities. For the service agencies, the park will provide a perfect place for their customers to participate in their communities, make friends and try new experiences. The park can also serve for on-site trainings and demonstrations about universally accessible recreation. We also will organize an annual community beautification day that will bring together community members of all ages and abilities.

## **5. Plan for ongoing maintenance of the project.**

The Monroe County Board of Commissioners and the Monroe County Parks and Recreation Board have shared financial and oversight responsibility of Karst Farm Park. The Monroe County Parks and Recreation Department has dedicated employees who conduct recreational programming and perform park maintenance. Playground safety checks, daily facility maintenance, and beautiful landscaping are top priorities of the park maintenance staff.

Our goal is to build an energy efficient and low maintenance ***Karst Farm Playscape*** that will be designed to recycle/reuse the water from the Spray Playground for a second use, use down lighting, plant perennials, use energy efficient electronics, and use solar panels where possible.

The maintenance plan for the ***Karst Farm Playscape*** consists of daily checks, and monthly/yearly upgrades. Project staff will select every product that will go into the ***Karst Farm Playscape*** for its durability, low maintenance, and weather resistant properties. Each playscape component will be tracked and put on a preventative

maintenance schedule. Park staff will monitor all of the audio, lighting, security, and irrigation components for efficiency. Ten years from now, the ***Karst Farm Playscape*** will look as “new” as the first day it was open for use.

As noted in the Administration section, The Monroe County Parks and Recreation staff has many years of experience in the areas of construction, heavy machine operation, playground installation, technology, irrigation, and landscaping. All of the excavation, concrete work, playground installation, irrigation engineering/installation, landscape design/installation, and construction labor will be performed/donated by Monroe County Parks and Recreation Department. The project will employ a civil engineer/land surveyor, audio/light contractor, a playground installation supervisor, electrician, and a landscape architect (drawings only) to assist with design and development. Monroe County Parks and Recreation staff has an excellent record in park construction and grant administration. Table 1 shows the estimated cost for each play component.

| <b>Table 1: Phase 1 Budget by Play Component</b>            |                  |
|---|------------------|
| <b>RECREATIONAL EXPERIENCE</b>                              | <b>COST</b>      |
| Water Adventure Sprayground & surface                       | \$170,000        |
| Indy Car Race Experience & surface                          | \$ 11,000        |
| Flag Pole & the National Anthem                             | \$4,000          |
| Playground Center Stage, swings & surface (5- 12 year olds) | \$120,000        |
| Sand Lot  | \$3,000          |
| Hoosier Tot Lot, swings, fence & surface (2-5 year olds)    | \$17,000         |
| Family Shelter House, picnic tables, & grills               | \$35,000         |
| Excavation, utilities & site preparation                    | \$40,000         |
| <b>TOTAL</b>  | <b>\$400,000</b> |

B. Assessment of Need

**1. Information from Recreation Providers**

In developing this project the partners sought information from recreation providers regarding the community need for recreation environments and experiences in the proposed project. We did this by working directly with Monroe County Parks and Recreation and by seeking other educational opportunities about accessible recreation. Initially the Steering Committee researched and compiled information from national and international experts on accessible recreation best practices. To gain further personal expertise, two project steering committee members participated in a statewide parks and recreation conference in January 2007. They attended a specific conference session about accessible recreation and gathered information from playground equipment vendors.

Monroe County Parks and Recreation have created accessibility plans for each of their facilities. The partners used these plans along with information from their master plan and public surveys to assess the recreation opportunities available in Monroe County. One of the most frequently requested features on the surveys were water activities. Water activities create some of the most inclusive recreation opportunities possible. The water elements at the Karst Playscape are a result of this perceived need.

The Steering Committee also sought advice from the experts at the National Center for Accessibility at Indiana University located in Bloomington. The playground expert, Jennifer Skulski, was aware of the project in the fall of 2006 but unable to attend any meetings. The executive committee set up a meeting with her in May 2007 to learn more about accessible recreation. She offered some advice on best practices and vendors as it relates to universally accessible playgrounds. Specific focus was on surfacing, multiple access points and the importance of shade, resting and supervision. Although not able to participate on the project steering committee, Ms. Skulski offered technical support, if the funds are awarded. These processes, combined with the input from surveys and meetings, have further underscored the need for this facility in the minds of the project Steering Committee and the community at large.

## 2. Specific Beneficiaries

The need for this type of facility is evident to all people with disabilities in this community, their advocates, professionals, and family members. The feedback gathered by the *Karst Farm Playscape* Steering Committee indicates that recreation opportunities for people with disabilities, both indoor and outdoor, are lacking in this community. Even in good weather there are not enough swings for children with physical disabilities, and platforms are not accessible with adaptive equipment. In poor weather, families without memberships to private facilities do not have anywhere to relax and enjoy each other.

Less than 10% of children with physical disabilities are able to leave their support devices behind and if they do, often can only pull themselves along with their arms or crawl through the equipment. This relegates some children with disabilities to the sidelines, who prefer to watch rather than to be without mobility devices. (Source: *Accessible Playgrounds for All Children, By Early Childhood Information Clearinghouse*)

There are an estimated 1300 people with disabilities and families who receive support from local providers in the region. The current numbers of people receiving services is summarized in the Table 2. An additional 275 individuals are waiting for services in Monroe County alone. Without information from the Southern Indiana Center for Independent Living (an independent living center serving most of south central Indiana), there are over 1,500 who would benefit from more accessible recreation in this community.

| Provider                                       | Number of Customers |
|--|---------------------|
| Christole, Inc                                 | 52                  |
| Options, Inc                                   | 250                 |
| Southern Indiana Center for Independent Living | Not available       |
| Stone Belt                                     | 1000                |
| Waiting for services                           | 275                 |
| Total:   | 1,577               |

This project will be a resource not only for Monroe County, but for the surrounding counties as well. The potential pool of users is reflected in the population data for Monroe County and the immediately surrounding counties: Brown, Greene, Morgan, Lawrence and Owen. See Table 3 below.

| Population by Age in 2005 for 6 County Region | Number | Pct Dist. in Region | Pct Dist. In State |
|---|--------|---------------------|--------------------|
| Preschool (0 to 4)                            | 17,086 | 5.5%                | 6.9%               |
| School Age (5 to 17)                          | 49,417 | 16.0%               | 18.7%              |
| College Age (18 to 24)                        | 47,363 | 15.3%               | 9.9%               |
| Young Adult (25 to 44)                        | 85,150 | 27.6%               | 27.6%              |
| Older Adult (45 to 64)                        | 73,015 | 23.6%               | 24.5%              |
| Older (65 plus)                               | 37,013 | 12.0%               | 12.4%              |
| <i>(Source: Stats Indiana)</i>                |        |                     |                    |

Table 4 outlines the numbers by type of disability and age. In the greater Monroe county region (including Brown, Greene, Morgan, Lawrence and Owen) there are about 500 children ages 5-15 with some sort of physical disability. In looking at mental disabilities for that area, the number jumps to 2,179 children.

|             | Sensory disability | Physical disability | Mental disability | Self-care disability | Go-outside-home disability | Employment disability |
|-------------|--------------------|---------------------|-------------------|----------------------|----------------------------|-----------------------|
| 5-15 years  | <b>427</b>         | <b>494</b>          | <b>2,179</b>      | <b>276</b>           | n/a                        | n/a                   |
| 16-64 years | 5,364              | 13,370              | 7,359             | 2,903                | 8,199                      | 20,187                |
| 65 + years  | 5,321              | 10,341              | 3,748             | 3,203                | 6,118                      | 5,321                 |

Source: U.S. Census 2000

Table 5 estimates the number of students in public schools for the six county region who are in special education programs. Based on the percentage of students and enrollment numbers, it is estimated that there are over 7,842 students in special education programs. A large percentage of these students may have specific physical and developmental disabilities and would directly benefit from a recreation area like the *Karst Farm Playscape*.

| Public School Corporation               | County   | Enrollment 2006-2007 | % Special Ed 2005-2006 | Est. Special Ed Pop |
|---|----------|----------------------|------------------------|---------------------|
| Monroe County Com Sch Corp              | Monroe   | 11034                | 16.2                   | 1787                |
| Richland-Bean Blossom C S C             | Monroe   | 2835                 | 19.3                   | 547                 |
| Brown County School Corporation         | Brown    | 2295                 | 19                     | 436                 |
| Bloomfield School District              | Greene   | 1122                 | 15.8                   | 177                 |
| Eastern Greene Schools                  | Greene   | 1411                 | 24.6                   | 347                 |
| Linton-Stockton School Corp             | Greene   | 1346                 | 18.8                   | 253                 |
| M S D Shakamak Schools                  | Greene   | 929                  | 21.3                   | 197                 |
| White River Valley Sch Dist             | Greene   | 885                  | 18.9                   | 167                 |
| Monroe-Gregg School District            | Morgan   | 1392                 | 15.3                   | 212                 |
| Eminence Community School Corp          | Morgan   | 529                  | 16.1                   | 84                  |
| M S D Martinsville Schools              | Morgan   | 5675                 | 15.7                   | 890                 |
| Mooresville Con School Corp             | Morgan   | 4469                 | 12.9                   | 576                 |
| North Lawrence Com Schools              | Lawrence | 5339                 | 19.5                   | 1051                |
| Mitchell Community Schools              | Lawrence | 2212                 | 20.9                   | 441                 |
| Spencer-Owen Community Schools          | Owen     | 3121                 | 21.7                   | 677                 |
|   |          |                      |                        |                     |
| <b>Totals for 6 Counties</b>            |          | <b>44594</b>         |                        | <b>7842</b>         |
| <b>Area average % Special Education</b> |          | <b>17.60%</b>        |                        |                     |

Source: Indiana State Department of Education

Through the survey process discussed previously, the *Karst Farm Playscape* Steering Committee was able to get some initial perceptions of people who may benefit from the project. The committee distributed surveys at the Options Annual Picnic and annual meeting. We received 64 responses. Table 6 presents the results. Note that 93.5% of the respondents indicated that there were not enough recreation opportunities available for people with disabilities.

| <b>Table 6 Accessible Recreation Survey Summary</b>  |           |   |            |            |
|--|-----------|---|------------|------------|
| 1. Do you or a person in your family have a disability?  | Yes 31.7% |   | No 68.3%   |            |
| 2. Are you a caregiver for someone with a disability?  | Yes 72.1% |   | No 27.9%   |            |
| 3. Do you feel there are enough recreational opportunities for adults and children with disabilities in Monroe County?   | Yes 6.5%  |   | No 93.5%   |            |
| 4. Please tell us if you think your community has too few, too many, or just the right amount of each of the following types of facilities and activities:   | Too Few   | Too Many  | Just Right | Don't Know |
| 4a. Indoor physical recreation opportunities for people with special physical needs  | 67.7%     | 0   | 4.8%       | 27.4%      |
| 4b. Outdoor physical recreation opportunities for people with special physical needs   | 81.7%     | 0   | 10%        | 8.3%       |
| 4c. Places to appreciate nature  | 58%       | 0   | 40.3%      | 1.6%       |
| 4d. Accessible Family Restrooms  | 68.3%     | 0   | 18.3%      | 13.3%      |
| 4e. Accessible Picnic areas with tables indoors  | 67.2%     | 0   | 14.8%      | 18%        |
| 4f. Accessible Picnic areas with tables outdoors   | 59%       | 0   | 24.6%      | 16.4%      |
| 4g. Accessible Playground equipment  | 85.2%     | 0   | 9.8%       | 4.9%       |
| 4h. Safe resting and lounging areas indoors  | 76.7%     | 0   | 5%         | 18.3%      |
| 4i. Safe resting and lounging areas outdoors   | 73.3%     | 0   | 10%        | 16.7%      |
| 5. Are there any indoor or outdoor park facilities not available in your community that you believe should be provided in order to better meet community needs?  |           |   |            |            |
| 1. Accessible waterfront areas (for fishing, etc.)<br>2. Adult playground with rope swings - handicap accessible. Public waterpark.<br>3. Broken equipment at Cascades Park- Accessible swing not fixed<br>4. Butterfly gardens; Bird Habitats; Pond areas; all with accessible walkways<br>5. Free access for people with disabilities going to public pools.<br>6. I feel it is being addressed.<br>7. I think the playground is great, as well as making parks more accessible would be great to allow people with disabilities the same amount of opportunities.<br>8. I think we need an outdoor water feature that kids are allowed to play in with - possibly water shooting/spouting out of ground.<br>9. I'm not sure what is available<br>10. Indoor parks<br>11. Leonard Springs, Cascades.<br>12. More accessible playground etc equipment for toddlers/infants with disabilities/special needs. |           | 13. More Accessible Swings Needed.<br>14. More in number and accessibility indoor swimming pools.<br>15. More playgrounds with rubberized surfaces<br>16. More sheltered areas.<br>17. Restrooms that accomodate persons requiring to lie down<br>18. Small animal/touching. Wonderlab is great but it isn't a park<br>19. Water park that is not essentially a swimming pool<br>20. Wheelchair accessible trails (other than clear creek) (Maybe paved trail?) For individuals in wheelchairs or who have balance/walking trouble.<br>21. Maybe a swing for disabled individuals.<br>22. Stimulating objects/equipment for children/adults with autism<br>23. Wheelchair accessible trails (paved trail).<br>24. A swing for disabled individuals.<br>25. Yes, all |            |            |

| 6. Could you suggest any specific types of equipment or activities that would be of benefit to adults and children with disabilities? Please list.   |   |
|--|---|
| <ol style="list-style-type: none"> <li>1. A swing designed for infants/toddlers with disabilities in addition to wheelchair accessible playground equipment</li> <li>2. Bathrooms and large changing tables; public pools that are accessible.</li> <li>3. Day programming/adult day care.</li> <li>4. Gardens to explore with various senses; bubbles/water play; wheelchair accessible playground equipment (swings, merry-go-round, etc.)</li> <li>5. Hammock type swings to accommodate all body types; really large spaced net equipment to get chairs into and people out of the chair</li> <li>6. Handicapped accessible slides at public pools</li> <li>7. Hiking Trails</li> <li>8. Local organizations for athletic competition among disabled people if not available it would be good to establish help for people to reach high shelves in stores.</li> </ol> | <ol style="list-style-type: none"> <li>9. Could be helpful poles for grabbing items, etc.</li> <li>10. More swings that are accessible for mobility impaired children</li> <li>11. More Swings.</li> <li>12. Play pools- swallow to sit in</li> <li>13. Ramps and concrete paths around places of interest and a special park with their needs in mind.</li> <li>14. Socialization- a lift or elevator to a slide for individuals in wheelchairs or those who have trouble with slides</li> <li>15. Socialization. A lift or elevator to a slide for individuals in wheelchairs or those who have trouble with slides</li> <li>16. Stretching and areas with pressure wraps.</li> <li>17. Swings that accommodate wheelchairs</li> <li>18. Trails with shade. Guides for disabled. Special programs at Wonderlab, etc.</li> </ol> |

**3. Information from people with disabilities, their families, and advocates.**

Gathering information from individuals with disabilities, their families, and advocates has been a primary goal since the original project Steering Committee formed in June 2006. This project originated as a request for input about accessibility from Monroe County Parks and Recreation to Options. It has resulted in a strong commitment from both organizations to the success of this project.

The Steering Committee meetings served as opportunities to collaborate and brainstorm specific features and activities that would meet the needs and interests of people with disabilities and their families. The participation from individuals with disabilities, their families, and advocates on the Steering Committee, provided a direct avenue for input. Please see some of the meeting minutes in Attachment B for specific ideas generated.

In October of 2006 the steering committee created a survey about accessible recreation in Monroe County. The survey was distributed at the Options Annual Picnic, sent out as an email link in multiple email list serves, and kept in the lobby of the Options office. The survey results, provided in the Assessment of Need section above, drove the partners to seek out funds to further develop the ideas gathered. The WK Kellogg request for proposal provided the Steering Committee with an excellent avenue to begin work.

**4. Proposal Development.**

In developing this project proposal the partners used existing resources developed over the past year through the project steering committee. As mentioned above the initial partners were Monroe County Parks and Recreation and Options. Both organizations used their existing networks to spread the word about initiating a project. In fact, the idea of starting a universally accessible recreation project quickly drew the interest of a wide range of partners. They included Bloomington Hospital, Monroe County Community School Corporation, Strategic Development Group, and people with disabilities and their family members. These partners formed a core group of organizations and individuals committed to pursuing a new vision of recreation for our community and at Karst Farm Park.

The project Steering Committee first met in June of 2006 to come up with ideas and resources for a universally accessible play area at Karst Farm Park. The types of people on the steering committee are listed under *Strategy 1-*

*Steering Committee* in the convening section. A specific list of Steering Committee members as well as minutes from some of the meetings can be found in Attachment B.

The committee was encouraged with the results of the fall meetings but realized the need for additional help with the project. From November 2006 to April 2007 an executive working committee sought a project intern and funds to begin the planning process. During that time the committee recruited and hired an intern from Indiana University, met with potential donors like Best Buy, submitted two entries in the Boundless Playground Essay Contest, sought educational seminars about universal accessibility (as described in section B1.), compiled a research summary and created a project webpage. All project partners have been contributing their time in-kind, with the exception of the project intern hired in April 2007 who receives a modest stipend provided by Options.

When the committee found the WK Kellogg's Access to Recreation grant, the partners quickly mobilized to gain the support of the Community Foundation of Bloomington and Monroe County. Through a series of four meetings with the Community Foundation staff and board, approval for a partnership for this grant was approved on June 12<sup>th</sup>, 2007. This generous grant opportunity fit perfectly with the original vision of the project steering committee to unite our community around a universally accessible play area. The grant also raised commitment to support and advocate for recreation to be accessible by all ages and abilities by promoting a community endowment.

## **II. Convening**

### **1. Convening Strategies.**

As mentioned in the previous section, the Steering Committee has been working on bringing people together since June of 2006. The primary convening strategy centers on the project Steering Committee.

With the support of the WK Kellogg Foundation, the partners will use the following strategies to enhance participation from all community stakeholders. These strategies will also serve to educate the community and collect input for the next phases of the project. The Steering Committee and Project Director will prioritize strategy implementation as funds allow. The project's primary focus will be on gaining participation by people with disabilities, their families, and recreation providers in the entire project.

#### *Strategy 1- Project Steering Committee*

The project Steering Committee has asked for and received participation from people with disabilities, their families and advocates, and recreation professionals. The committee first formed in the summer of 2006 as a result of collaboration between Options and Monroe County Parks and Recreation. The partners will continue to expand membership to interested community members while maintaining a core group of representation from original participants. The Administration section provides a detailed list of participants.

The Steering Committee includes:

- Recreation professionals
- People with disabilities
- Families of people with disabilities
- Caregivers and advocates for people with disabilities
- Government representatives
- Business community
- Education professionals

The Steering Committee operates with an open meeting format and encourages different and interested people to attend as their schedule permits. The group is charged with providing guidance on design, publicity, and fundraising for the project. Subcommittees of the Steering committee form as needed to focus on each of the afore mentioned areas.

### *Strategy 2- Virtual Community*

Webpage- The project has already established a webpage (<http://www.sdg.us/karstplayscape>) that adheres to website accessibility navigation standards. The webpage summarizes our project, links to project surveys, holds project documents and serves as one of our central communication avenues. There will be interactivity and resources available on the webpage as the project progresses.

Email Listserv- The Steering Committee has started an email listserv to pass along information and create dialog between all project participants. As the project reaches more people it will expand the distribution to include all interested parties.

### *Strategy 3- Focus Groups*

There will be at least two focus groups for customers and families working with Options, Stone Belt, Christole, Southern Indiana Center for Independent Living, and other support services providers in the area. The purpose of the focus groups will be to get reaction to planned activities at the **Karst Farm Playscape** and gain insight into potential problems. Secondly the focus groups will provide a direct connection to people and families who may benefit from the **Karst Farm Playscape**.

### *Strategy 4- Playground Drawing Project*

One way to get people involved in a project is to provide an activity that brings out their creativity. A drawing project open to the public will ask the community to dream up their ideal accessible recreation features and opportunities. Participants will answer questions like: How can we all play, explore and enjoy our community together? This could include any recreation features from playground equipment, water front activities and mural ideas. The drawings will be collected by mail, public drop off locations, and at community events.

Specific partnerships with the following groups will help the project to gain participation from people of all ages and abilities:

- Educators (Monroe County Community School Corporation, Richland-Bean Blossom, Harmony School, Montessori, and St. Charles and daycares, Monroe County Public Library )
- Professional Therapeutic Services (Options, Stone Belt, Christole, Center for Behavioral Health, Rehabilitation)
- Community Arts Organizations (Waldron Arts Center, Indiana University)
- Youth Services Organizations (Girls Inc, Boys and Girls Club, Bloomington Parks and Recreation, YMCA)
- Other community service organizations

### *Strategy 5- Key Informant Interviews*

Project staff will conduct several key informant interviews to gain further insight from people with specific areas of expertise or experience. The project Steering Committee will choose those to be interviewed. Staff will conduct interviews in person or over the phone and put into a web survey format.

### *Strategy 6- Public Survey*

The project Steering Committee has already created a survey and begun distribution (see Assessment of Need section). Using our existing network of partners, supporters and media resources the partners will widely publicize the project and need for community input. The project will then distribute the survey in various ways in order to get the greatest amount of feedback.

Sources of survey distribution will include:

- Mailing lists
- Email distributions lists

- Public distributions points
- Libraries
- Schools
- Government buildings
- Restaurants
- Existing community events
- Educational/ health fairs
- Public meetings
- Arts and recreation events

#### *Strategy 7- Community Design Charrette*

A community "Charrette" will be considered during the design phase of the project. This process would include a temporary design studio, perhaps at the county courthouse, to share the process of design, conceptualization, and information gathering with interested community members. This can be an energizing and creative experience, allowing all participants to be heard and contribute to the final plans.

### **2. Convening Activities.**

The specific convening activities mentioned above will educate the community about universal recreation access concepts. The process of informing, educating, and engaging people about this project will happen synergistically. Specifically, the activities most suited to the educational focus are: Playground Drawing Project, Virtual Community, and the Community Design Charrette.

In conjunction with the endowment building activities mentioned in section IV, the partners will develop a media campaign once the project is funded. The local newspaper, the Bloomington Herald Times, has already expressed interest in covering the project. Through the media, endowment, and convening activities above the project will keep the issue of universally accessible recreation in the spotlight through its completion and beyond. The media campaign will continue throughout the project and include press releases, progress reports, and interviews with local media outlets.

The Project Director and Project Coordinator will be responsible for carrying out the activities of the convening process. To help with this task and ensure the fullest participation from people with disabilities and recreation providers, the project Steering Committee will appoint a Project Management Team to oversee the convening process. The tasks, timelines, and responsibilities are outlined in the work plan in Section III.

### **3. Policy Changes.**

In addition to building a totally accessible Playscape, the project proposes to facilitate changes to enhance recreation opportunities for people with disabilities across systems. By working with lawmakers to develop specific policies that will impact local planning and development, this project will establish a long term commitment to the goals of access for all. Many of the strategies described above will serve a dual purpose to educate about accessible recreation concepts and policy at the same time. Specifically the following strategies will be the best suited to both awareness and policy information: Project Steering Committee, Key Informant Interviews, and the Community Design Charrette.

The Monroe County Access to Recreation project proposes to target the following specific types of policy changes for implementation in our community. To gain interest and commitment the project will hold a special educational forum for policy makers about accessible recreation via a legislator's luncheon. Participants will include township, city, county, state, and federal representatives as well as people in professional services like law and health care.

#### *Policy 1*

Integration of Universal Accessibility into Monroe County Parks and Recreation Master Plan. The Monroe County Parks and Recreation Department anticipates completing their 2007-2011 Master Plan by December 2007. This

allows for the information gathered in the convening and educational activities during the fall of 2007 to be integrated into the Master Plan. This will provide a greater source of primary information about the community's perceptions of its recreation environments as they relate to universal accessibility issues. The project Steering Committee will advocate for a very strong commitment in their Master Plan that goes beyond the basic requirements.

#### *Policy 2*

The project Steering Committee will draft a resolution that will service not only Monroe County, but can serve as a model resolution for other counties, cities and towns across the region. The resolution would be drafted in consultation with the Monroe County Attorneys and the Parks and Recreation Department. The resolution would state the community's intention to prioritize considerations to exceed ADA standards in the design of new and upgrades to recreation projects in their community.

#### *Policy 3*

A final proposed policy we would target for implementation is an accessibility review of city, town, and county recreation projects in Monroe County. The review could be done by the Monroe County Access to Recreation partners, the Monroe County Planning Department, or a specially appointed accessibility coordinator.

### **4. Marketing.**

During the convening and endowment building processes the project will establish many new relationships. Through these and existing resources the project will market the availability of the ***Karst Farm Playscape***. This includes spreading the word through Steering Committee and community partners and continuing to get coverage in the media.

Several events including a large community ground breaking and a grand opening will be highly publicized through our partners and the media. To specifically inform people with disabilities, their families, and advocates of the Karst Farm improvements the project will have direct communication with over 1,300 individuals and families receiving services from Options, Christole, Stone Belt, and Southern Indiana Center for Independent Living. And finally, the project will work with the City of Bloomington's Council on Community Accessibility to spread the word.

### **III. Administration**

#### **1. Overall plan for administration.**

Kelli Witmer of Monroe County Parks and Recreation will serve as the ***Project Director*** and be responsible for overall project management. The Director will be housed at Monroe County Parks and Recreation and will act as a liaison to all community partners and work in concert with the Community Foundation to ensure the efficient and effective completion of project activities. In addition to this position, a ***Project Coordinator*** will be hired to work with community partners in conducting the convening activities outlined and to oversee the development and implementation of the endowment campaign. The ***Project Coordinator*** will be employed by Monroe County Parks and Recreation and supervised by the ***Project Director***. In addition, the project will make use of staff within each of the partnering agencies. The ***Karst Farm Playscape Team*** gathers a unique cadre of professionals who have excellent credentials and many years of experience in their respective fields. The following outlines the specific individuals and their backgrounds, along with their scope of responsibility. Those positions asterisked (\*) below from Monroe County Parks and Recreation Department and Options will donate their staff time to this project.

#### **\* Project Director**

Responsible for project oversight, procurement, and program reports.

Team Member: Kelli Witmer

- B.S., School of Public and Environmental Affairs, Labor Relations and Personnel Management, Indiana University, Bloomington.
- M.S., HPER, Park and Recreation Administration, Indiana University, Bloomington.

- Over 22 years of experience in park and recreation programming and administration.
- Worked for Indiana University recreational sports, Monroe County YMCA, Bloomington Parks, Amateur Athletics Union, and the President's Council on Physical Fitness.
- Currently Assistant Administrator for Monroe County Parks and Recreation Department.

**Endowment Manager – paid professional**

Responsible for endowment fund management and distribution, assist the recreation endowment advisory committee, and the ongoing promotion of the endowment fund.

Team Member: Shari Woodbury

- B.A., Sociology, Iowa Wesleyan College, M.A., Sociology, Indiana University
- Eight years experience in non-profit project development and management, fundraising, grantmaking, and endowment management, including 6 years in fund development
- Worked as project manager for community development consulting firm, Executive Director of Community Foundation Partnership, and Development Director for a national non-profit
- Currently President and Chief Executive Officer for the Community Foundation of Bloomington and Monroe County.

**Fiduciary Manager - volunteer**

Responsible for financial reports.

Team Member: Kathy Cochard

- B.S. School of Business, Accounting, Indiana University, Bloomington
- Indiana Certified Public Accountant.
- Over 19 years experience in the financial field.
- Worked as a credit union internal auditor, payroll and pension administrator, tax accountant and preparer, accounting manager, and tax compliance officer.
- Currently Auxiliary Accountant and Accounts Receivable Supervisor for Indiana University.

**\* Inclusive Specialist and Marketing Manager**

Responsible for accessibility design, marketing, communications, and fundraising.

Team Member: Susan Rinne

- Masters of Public Affairs, Public Management Concentration, Indiana University, Bloomington
- Over 25 years experience working with people with disabilities and their families
- Worked at Indiana University providing technical support to agencies serving people with disabilities for 8 years.
- Currently Executive Officer for Options, Inc.

**\* Construction Manager and Irrigation/Water Specialist**

Responsible for accessibility/project design, daily on site construction supervision, landscape design, and water feature design.

Team Member: Chuck Stephenson

- B.S. Natural Resources management and Conservation, Purdue University.
- Over 15 years of experience in park and recreation design, construction and administration.
- Over 18 years of experience in irrigation and commercial lawn and plant care.
- Worked for Lake County Parks, Adams County Parks, and business owner.
- Currently Administrator for Monroe County Parks and Recreation Department.

**Civil Engineer – paid professional**

Responsible for accessibility/project design and land surveying.

Team Member: Phil Tapp

- B.S., Land Surveying and Civil Engineering, Purdue University.
- Over 31 years of experience in land surveying and design services.

- Worked for Smith Quillman & Associates, Blackwell Construction, and Bledsoe Tapp & Riggert, Inc.
- Currently President of Philip O. Tapp & Company, Inc.

**\* Environmental Designer**

Responsible for environmental interpretation, landscape design, and plant selection/location

Team Member: Cathy Meyer

- B.S., Biological Sciences, Indiana University, Bloomington.
- M.A., Zoology and Physiology, Indiana University, Bloomington.
- M.S.E.S., Ecology and Field biology, Indiana University, Bloomington.
- Over 25 years of experience in environmental services.
- Worked for Indiana Department of Natural Resources: Fish and Wildlife Division, State Parks Division, Reservoir Management, and the Heritage Program.
- Worked for Indiana University, Bloomington: Biology facility assistant and biology associate instructor.
- Currently Supervising Naturalist for Monroe County Parks and Recreation Department.

**Audio and Light Production Contractor – paid professional**

Responsible for audio and systems control, theme lighting, and video security system.

Team Member: Chris Ramsey

- Over 20 years of experience in professional audio and light contracting.
- Responsible for instructing Indiana University Jacobs School of Music and interns in the physics and theory behind and the hands on set-up of a concert sound system.
- Through knowledge in Yamaha, TC Electronic, DBX, QSC, and Powersoft.
- Live concert production, studio and live-remote digital and analog multitrack recording
- Factory authorized audio dealer, installer, trainer and repair person.
- Sound and light contractor for many local private and public entities.
- Currently President of Kingsnake Sound Company.

A ***Project Management Team*** including the Project Director, Project Coordinator, and Options staff will meet bi-weekly to oversee project staff and ensure the project meets identified goals and objectives in a timely fashion. They will be responsible for creating strategies to sustain this project's activities after W.K. Kellogg grant funding has expired. We believe the strength of this project and the sustainability of the system will be achieved by capitalizing on our diverse community resources including generic, as well, as disability-related services.

A ***Monroe County Access to Recreation Steering Committee*** will meet bi-monthly and will serve as the pulse of the community's recreation needs and prioritize initiatives and activities across systems in the area. Members of the Steering Committee will consist of representatives of all partners listed in Table 7 below including people with disabilities, family members, other agencies providing service to people with disabilities, the community providing recreational services, and the philanthropic community. The Steering Committee will provide guidance to the design, building, and ongoing maintenance of the projects, and assist with the identification and development of other accessible recreation activities and policy initiatives taken on by the project in the future.

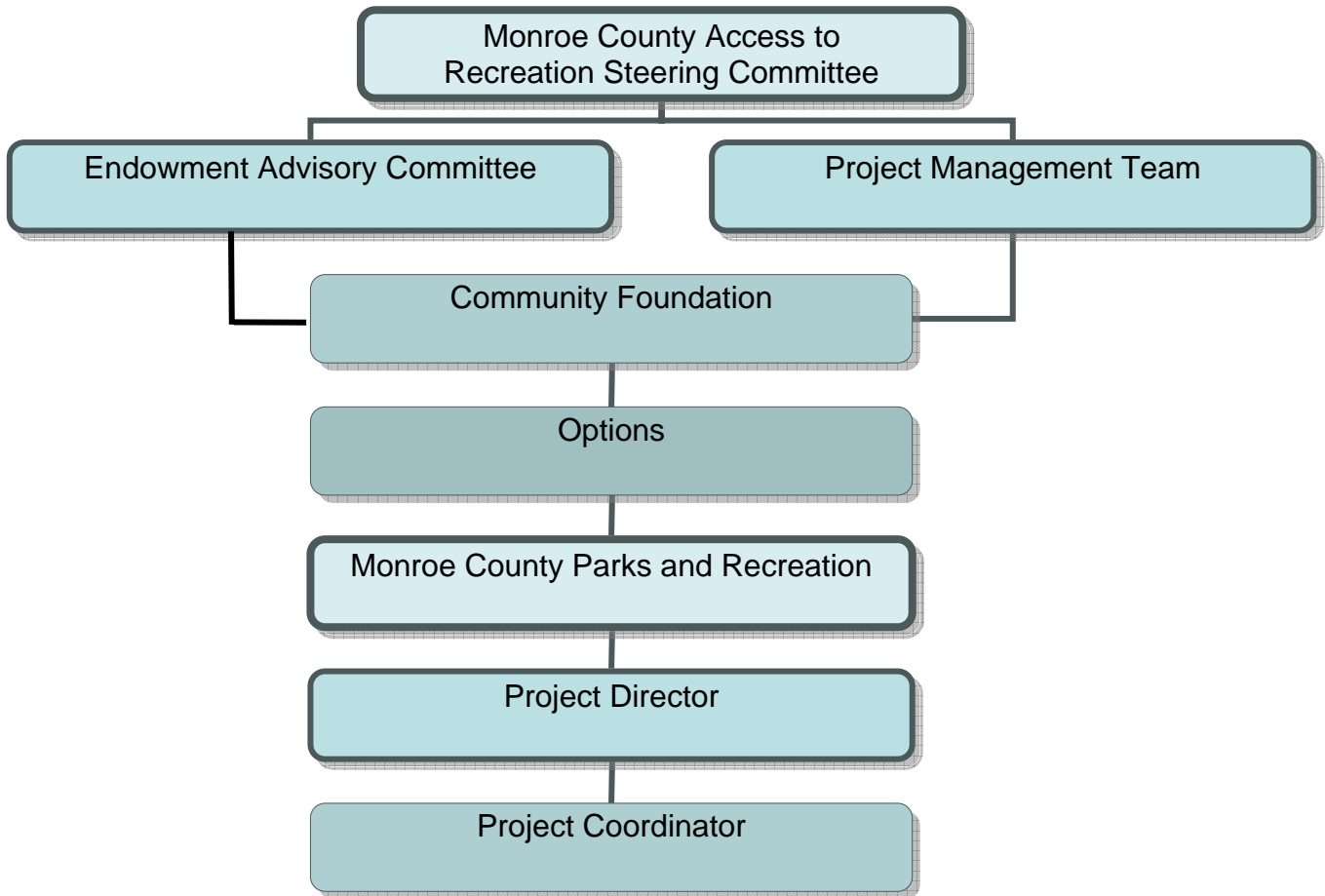
A subgroup of the Steering Committee will serve as the Monroe County Access to Recreation ***Endowment Advisory Committee***. This group will oversee the implementation of the endowment campaign as described in the next section and make recommendations to the Community Foundation of Bloomington for the distribution of the Monroe County Access to Recreation Endowment Fund's spendable income in the future. The committee will have seven members including a member of Monroe County Parks and Recreation Board; a representative from Options; an individual with a disability or family member, a Parks and Recreation professional, a representative of the Community Foundation, a medical/therapeutic recreation professional or individual with disability or family member, and a representative of the school system.

***Project oversight*** will be conducted at all levels during this project. The ***Project Management Team*** will maintain a list of work activities and timelines and reports will be completed monthly on progress for submission to

the **Steering Committee**. Minutes of meetings for each of these groups will be maintained by the Project Coordinator and provided to all partners and shared with W.K. Kellogg through the required reporting processes. Monthly reports will address any shortfalls with recommendations for next steps which will be approved by the Steering Committee.

| SAMPLE MONTHLY REPORT      |                   |   |   |
|----------------------------|-------------------|---|---|
| Project activity           | Expected Timeline | Status  | Recommendation  |
| Site engineering completed | December 31       | Completed site excavation 12/15 and began construction on Water feature | Get feedback from National Center on Accessibility on placement of specific features. |

The following organizational chart delineates the relationship of all of these groups to **Project Director and Coordinator** and the partners in the **Monroe County Access to Recreation** project.



## 2. Administrative responsibilities.

Each partner will play a key role in the success of ***Monroe County Access to Recreation: Karst Farm Playscape project***. The following outlines the structure and specific responsibilities of each including progress reports and activities:

- ❖ ***Community Foundation***. As fiscal steward of the project, the Community Foundation would play several critical roles including:
  - Accept project funding from W.K. Kellogg. Administration and project building funds will be contracted to Monroe Parks and Recreation, as established in a formal funding agreement stipulating their use for the grant activities and timelines.
  - Ensure W.K. Kellogg's reporting requirements are met. Community Foundation will work with Monroe County Parks and Recreation to complete necessary reports to WK Kellogg and submit them in a timely fashion
    - Serve on the ***Steering Committee*** for the duration of the WK Kellogg grant period.
  - Manage the Access to Recreation Endowment Fund. The Community Foundation will manage the endowment fund accordingly, ensuring that grant making meets the intent of WK Kellogg's Access to Recreation initiative. The Community Foundation will develop a fund agreement detailing how it will administer the fund, in accordance with its standard policies and practices, Access to Recreation Initiative guidelines, and any further guidance provided by W.K. Kellogg through its grant agreement or advisors. This fund agreement will guide decision making regarding the endowment in perpetuity.
- ❖ ***Monroe County Parks and Recreation***. As the recreational experts, they will provide the resources to complete the majority of project activities including
  - House project staff
  - Oversee project design and construction.
  - Serve on both the Project Management Team and the Steering Committee.
  - Implement all project activities and coordinate with partners
  - Complete grant reports and submit to Community Foundation for approval before they are sent to Kellogg
  - Gain input from community, people with disabilities and their families regarding project activities and overall recreation needs.
- ❖ ***Options***. As one of the connections to individuals with disabilities and their families, Options will provide technical advice regarding accessibility design, marketing, communications, fund raising, and project management to ensure people with disabilities considerations are paramount. Additionally the agency will:
  - Assist in connecting with families and individuals with disabilities for input and communication,
  - Provide resources and support for endowment building,
  - Provide office support, as needed, for project staff.
  - Participate on Steering and Endowment Advisory committees

In addition, through the ***Steering Committee*** and other structures, the project will make use of the expertise and resources of a number of other key stakeholders. Table 7 illustrates the breadth of support that this project will have from our community. Please see letters of support contained in Attachment C for more detail about commitments and contributions.

**Table 7 Proposed Monroe County Access to Recreation Karst Farm Playscape Partners**

| Partner   | <i>Endowment Advisory Committee</i> | <i>Project Management Team</i> | <i>Steering Committee</i> | <i>Financial Commitment</i> | <i>Other Contribution</i>                      |
|---|-------------------------------------|--------------------------------|---------------------------|-----------------------------|--|
| Community Foundation of Bloomington and Monroe County | √                                   |                                | √                         |                             | <b>Endowment building technical assistance</b> |
| MC Parks and Recreation                               | √                                   | √                              | √                         | √                           | <b>In kind labor, land, administration</b>     |
| Options   | √                                   | √                              | √                         | √                           | <b>Fundraising and staff support</b>           |
| Christole   |                                     |                                | √                         |                             | <b>Support, outreach and referral</b>          |
| MC Commissioners                                      |                                     |                                |                           | √                           | <b>Support, outreach and referral</b>          |
| School representative                                 | √                                   |                                | √                         |                             | <b>Technical support</b>                       |
| National Center on Accessibility Indiana University   |                                     |                                | √                         |                             | <b>Evaluation and recommendations</b>          |
| Stone Belt  |                                     |                                | √                         |                             | <b>Support, outreach and referral</b>          |
| Bloomington Hospital Children's Therapy Clinic        |                                     |                                | √                         |                             | <b>Support, outreach and referral</b>          |
| Youth Serving Organizations                           |                                     |                                | √                         |                             | <b>Support, outreach and referral</b>          |
| Strategic Development Group                           |                                     | √                              | √                         |                             | <b>Needs assessment technical support</b>      |
| Individual with a disability                          | √                                   |                                | √                         |                             | <b>Support, outreach and referral</b>          |
| Family member with a child with a disability          | √                                   |                                | √                         |                             | <b>Support, outreach and referral</b>          |
| AMVETS  |                                     |                                | √                         |                             | <b>Support, outreach and referral</b>          |

**3. Plan for communication to the public.**

The **Project Coordinator** will serve as the central point for communication and but all partners will help to publicize the project through a variety of print, internet, and conference media. The project will take advantage of the high profile of its partners to get information to the public about the project and its progress. Upon award of the project, the partners plan a press conference for print and television media in the area, including the Bloomington Herald Times and the Indianapolis Star. In addition, the **Project Director** will present information at all county meetings which are televised on local cable channel, including the County Commissioner's and County Council.

The **Project Coordinator** will send out regular press releases to all media outlets. Each collaborator will advertise the project in their respective newsletters, thereby reaching approximately 5,500 people in south central Indiana. Articles will inform donors, staff, volunteers, students, and clients about the project goals and ongoing communication will highlight how the project is achieving the stated outcomes.

All materials will recognize WK Kellogg and other project sponsors. The **Monroe County Access to Recreation: Karst Farm Playscape** Project will have a brochure and website indicating WK Kellogg Foundation's generous support and sponsorship. The collaborators will distribute the brochure to all of the people connected to their organizations.

The **Project Director** will present the results at local and statewide conferences and workshops including the Greater Bloomington Chamber Chats, regional and national recreation conferences. The collaborators will also secure booth space at the Bloomington Chamber of Commerce Business Expo in April 2008, an event attended by hundreds of community member to share progress and to get input into future **Monroe County Access to Recreation** activities.

**4. Work plan and timelines.**

The project partners will work together to ensure that detailed work plans are completed for each of the major components. The following table outlines initial activities but we anticipate that more detail will come as all input is analyzed and the design phase is completed. Table 8 also lists responsible partners and budget detail for each component. The table provides costs connected to specific activities where needed. It can be found on page 28.

The budget tables below summarize the overall request. Table 9 gives request by area, Table 10 outlines the funding commitments from the community to date, Table 11 summarizes in kind contributions from Monroe County Parks and Recreation, and Table 12 details cost of each component of Phase one of the **Karst Farm Playscape**.

**Table 9: Resource List**

| Area   | Community Participation | Foundation Request | Total            |
|--|-------------------------|--------------------|------------------|
| Recreation Project<br>See Budget for Phase 1 for more detail | 200000                  | 200000             | 400,000          |
| Convening  |                         | 26000              | 26,000           |
| Administration   |                         | 66000              | 66,000           |
| Endowment  | 134000                  | 134000             | 268,000          |
| <b>Total</b>   | <b>\$334000</b>         | <b>\$426000</b>    | <b>\$760,000</b> |

**Table 10: Community Partner Commitments**

| Area                          | Description                                 | Amount           |
|-------------------------------|---|------------------|
| MC Commissioners              | Binding commitment letter, see Attachment C | 200,000          |
| Options                       | Binding commitment letter, see Attachment C | 35,000           |
| MC Parks and Recreation Board | Binding commitment letter, see Attachment C | 50,000           |
| <b>Total</b>                  |   | <b>\$285,000</b> |

**Table 11: In-kind contributions by Monroe County Parks and Recreation**

| Area              | Description   | Estimated Amount                            |
|-------------------|---|---|
| Labor (salaried)  | Project construction  | 55,000                                      |
| Land              | Playscape area  | 200,000                                     |
| Related amenities | Restroom, parking lots, park road, pre-civil war barn, security | 900,000                                     |
| Insurance         | Comprehensive general liability                                 | Included in Monroe County Government policy |
| <b>Total</b>      |   | <b>\$1,155,000+</b>                         |

**Table 12: Phase 1 Budget by Play Component**

| <b>RECREATIONAL EXPERIENCE</b>                              | <b>COST</b>      |
|---|------------------|
| Water Adventure Spray Playground & surface                  | \$170,000        |
| Indy Car Race Experience & surface                          | \$ 11,000        |
| Flag Pole & the National Anthem                             | \$4,000          |
| Playground Center Stage, swings & surface (5- 12 year olds) | \$120,000        |
| Sand Lot  | \$3,000          |
| Hoosier Tot Lot, swings, fence & surface (2-5 year olds)    | \$17,000         |
| Family Shelter House, picnic tables, & grills               | \$35,000         |
| Excavation, utilities & site preparation                    | \$40,000         |
| <b>TOTAL</b>  | <b>\$400,000</b> |

#### **IV. Endowment Building**

The W.K. Kellogg Foundation grant has two main components. The first is the project itself along with administration/convenings. The second component is the **creation of an endowment** in the Community Foundation of Bloomington and Monroe County. The endowment (\$268,000 beginning balance) will be used for the long term maintenance of the *Karst Farm Playscape* Area and for future accessible recreation projects. The endowment will be named: *Monroe County Access to Recreation Endowment*.

As noted above, this endowment will be overseen by the *Endowment Advisory Committee*, a group that includes people with disabilities, civic leaders, and the philanthropic community. This group will make recommendations to the Community Foundation for the distribution of the Monroe County Access to Recreation Endowment Fund's spendable income. The committee will have seven members including a member of Monroe County Parks and Recreation Board, a representative from Options, an individual with a disability or family member, a Parks and Recreation professional, a representative of the Community Foundation, a medical/therapeutic recreation professional, or individual with disability, family member who has a child with a disability, and a representative of the school system.

At this time there is commitment for all but \$49,000 of the \$134,000 match for the endowment. The *Endowment Advisory Committee* will work with the Community Foundation to design a media and fundraising campaign that will raise the remaining dollars and provide for the endowment's ongoing development. While it is not definite, we are confident that Monroe County Parks and Recreation Board will ensure our success at raising the total funds needed.

##### **1. Overall plan for endowment building.**

The endowment will give Monroe County Access to Recreation security for the future of the Karst Farm project but will also provide a chance to make improvements across recreational environment. Because of its large impact, the campaign will target other agencies which support people with disabilities (e.g. Christole, Stone Belt, Southern Indiana Center for Independent Living, Abilities, etc) private corporations with an interest in health related issues, school corporations, other grant makers, entities working with Veterans with Disabilities, and individual donors.

The *Endowment Advisory Committee* with input from the Community Foundation will establish benchmarks for the number of prospects identified, number of contacts completed with potential donors, dollars received, number of donors, and total dollars pledged.

The collaborators include agencies willing to make a substantial financial commitment and to provide the resources for campaign development and implementation. The partners have agreed to provide access to agency mailing lists for solicitations and to provide staff resources for individual solicitations. All have been highly successful at raising dollars for similar projects. The committee will ensure a unified message (case for support) in the campaign, and coordinate the process of qualifying and contacting prospects from among what are likely overlapping donor lists.

Specific tasks include:

- Design and complete marketing materials: *Flyer, website and brochure describing the project and providing a model of playground to present the case to potential donors. A project logo that visually communicates the goal of accessible recreation may be designed for use in these and other project materials.*
- Develop and implement a gift table: *A strategy for defining and targeting the number and size of gifts needed at all donation levels with corresponding donor benefits*
- Press conference to "kick off" endowment campaign: *–Project Coordinator will send press releases to all media in the area.*
- Mail/Email solicitation to qualified prospects provided by partners and other contributing entities: *letters providing updates on the project and requesting support. Target: general public, potential donors.*
- Mail/Email project update letters: *Information for donors about project progress encouraging them to contribute larger amounts. Target: endowment givers.*

- Individual contacts with qualified corporate prospects: *Partners will work to identify contacts in key businesses and make visits to solicit support.*
- Personal visits to qualified major gift prospects (individuals): *Partners will identify prospects capable of major gifts and present the case for leadership gifts. All partners agree to conduct face-to-face solicitations.*
- Use all available media to communicate endowment purpose and short-term dollar goal: *All partners agree to include the endowment campaign in their literature and invite support*

The following pyramid will provide a guide for the size and number of gifts we will need to secure to meet our fundraising goal by March 2009.

| <b><i>Giving Pyramid - Additional \$50,000 for Access to Recreation Endowment</i></b>   |                    |                |                 |                  |                   |
|---|--------------------|----------------|-----------------|------------------|-------------------|
| These numbers represent a typical response to a mail appeal in terms of ratios of prospects to donors and gift ranges for the goal. As our effort will include a significant focus on personal contacts with major gift prospects (organizations and individuals), we are likely to see more large gifts and not need as many small gifts. However, we do intend to incorporate broad appeals into this campaign so as to raise awareness of and build sustained commitment to accessible recreation. The collective efforts of our partners may result in greater total contributions to the Access to Recreation Endowment for our community than the amount required to meet the terms of the Kellogg grant. |                    |                |                 |                  |                   |
| <b>Gift Size</b>  | <b># Prospects</b> | <b># Gifts</b> | <b>\$ Total</b> | <b>Avg. Gift</b> | <b>% total \$</b> |
| \$3,000   | 5                  | 1              | \$3,000         | \$3,000          | 6.00%             |
| \$1,500   | 10                 | 2              | \$3,000         | \$1,500          | 6.00%             |
| \$750   | 32                 | 8              | \$6,000         | \$750            | 12.00%            |
| \$500   | 64                 | 16             | \$8,000         | \$500            | 16.00%            |
| \$250   | 72                 | 24             | \$6,000         | \$250            | 12.00%            |
| \$100   | 360                | 120            | \$12,000        | \$100            | 24.00%            |
| Under \$100 (avg. \$30)   | 800                | 400            | \$12,000        | \$30             | 24.00%            |
| <b>Totals</b>   | <b>1343</b>        | <b>571</b>     | <b>\$50,000</b> | <b>\$88</b>      | <b>100.00%</b>    |

**2. Overall plan, with descriptions of specific activities, for the ongoing promotion.**

The partners are committed to the ongoing promotion of the Monroe County Parks and Recreation Endowment so that all barriers identified in the Assessment section above can be addressed. The following are activities that will be overseen by the Endowment Committee.

- Donor recognition: Major donors will receive ongoing recognition at the Karst Farm site. The type of recognition could include: naming of specific areas of the park, donor wall possibly in limestone to reflect the “Hoosier” nature of the space. Endowment donors will also be eligible for general recognition programs of the Community Foundation, including the donor recognition wall at City Hall recognizing cumulative lifetime giving and its Legacy Society to thank planned gift donors.
- Special events: The Monroe County Access to Recreation Endowment committee will conduct several events at the Karst Farm Park site including a ground breaking, annual picnic to highlight features of the park developed, and grand opening. Events will be used for donor cultivation and stewardship during and beyond the period of the W.K. Kellogg grant.
- Establishing guidelines: The committee will establish guidelines that will drive ongoing development efforts that outline: recognition, pledge completion, restrictions on gifts, and acceptance of planned gifts.
- Planned giving: The committee will plan for the integration of planned giving information into donor outreach and stewardship efforts during and beyond the campaign. This project provides a wonderful opportunity to promote continuing commitment to accessible recreation in Monroe County. The Community Foundation is building a planned giving program that stands to benefit this fund along with all other permanent endowments.

- Endorsements by community leaders: the project will seek out support from local politicians to ensure visibility within government structures on an ongoing basis.

### **3. Plan for Endowment Committee and strategies to engage people with disabilities.**

As noted in the Administration section, a subgroup of the Steering Committee will serve as the Monroe County Access to Recreation *Endowment Advisory Committee*. This group will oversee the implementation of the endowment campaign and make recommendations to the Community Foundation for the distribution of the Monroe County Access to Recreation Endowment Fund's spendable income in the future. The MC Government will establish a charter for the committee that outlines the required membership including people with disabilities and organizations and services that support them. The County Commissioners will appoint the members, formalizing the process and positions, ensuring they are in place well into the future.

People with disabilities, families, and service organizations will play a critical role in designing, overseeing the building of the project, and the endowment. The group has used several strategies to date that have been extremely helpful in gaining their input and support including surveys, participation on the Steering Committee, participation at events held by Options, and individual contacts. Recreational professionals from Monroe County Parks and Recreation will be directing project activities and will seek out information from others through contacts with the National Center on Accessibility. The National Center will provide technical support to the project Steering Committee and the staff on the design and building of the *Karst Farm Playscape*. Their consultation will bring the expertise of those around the country who have worked on similar projects.

**Table 8 Access to Recreation Work Plan**

| <b>Project Design</b><br><b>\$15,000</b><br>Included in administration dollars in budget |  |                              |
|--|--|------------------------------|
| <b>Activity</b>  | <b>Responsible</b>                           | <b>Timeline</b>              |
| Site engineering   | MC Parks and Rec                             | December 2007                |
| Finalize features of the Playscape   | Project Director                             | December 2007                |
| Draw the plan for park   | Civil Engineer                               | December 2007                |
| Technical support consultation with National Center on Accessibility                     | Project Management Team                      | Ongoing                      |
| Incorporate information from convening process   | Steering Committee                           | December 2007                |
| Integrate information gathered from people with disabilities and service providers.      | Project Management Team                      | Ongoing                      |
| Revise plan as needed  | Project Director                             | December 2007                |
| Develop plans for all phases of Playscape  | Project Director                             | December 2007                |
| Approval by Steering Committee   | Steering Committee                           | December 2007                |
| Approval from MC planning department   | MC Parks and Rec                             | January 2008                 |
| <b>Playscape Construction</b><br><b>\$400,000</b>  |  |                              |
| <b>Activity</b>  | <b>Responsible</b>                           | <b>Timeline</b>              |
| Outline and order playground equipment   | Project director                             | February 2008                |
| Break Ground   | MC Parks and Recreation                      | March 2008                   |
| Complete Phase One   | Project Director and MC Parks and Recreation | March 2009                   |
| Daily oversight of work  | Project Director                             | Ongoing throughout project   |
| <b>Convening</b><br><b>\$26,000</b>  |  |                              |
| <b>Activity</b>  | <b>Responsible</b>                           | <b>Timeline</b>              |
| Convene steering committee   | Project Coordinator                          | Bi-monthly through project   |
| Develop email list serve and project website   | Project Coordinator                          | August 2007                  |
| Conduct focus groups of community members and people with all types of disabilities      | Project Coordinator                          | September 2007               |
| Playscape drawing project  | Project Coordinator                          | March 2008                   |
| Public Survey  | Project Coordinator                          | Sept – Nov 2007              |
| Community Design Charrette   | Project Coordinator                          | Sept 2007                    |
| Integration of Universal Access into MC Park Master Plan                                 | Monroe County Parks and Recreation           | December 2007                |
| Model Resolution for other counties/cities/towns   | Project Director                             | Fall 2008                    |
| Accessibility Review of city/county projects   | Project Director                             | January 2009                 |
| Educational forum for policy makers about accessible recreation                          | Project Director                             | Spring 2008                  |
| Design Media Campaign  | Project Management Team                      | September 2007               |
| <b>Administration</b><br><b>\$51,000</b><br>Included in administration dollars in budget |  |                              |
| <b>Activity</b>  | <b>Responsible</b>                           | <b>Timeline</b>              |
| Hire project coordinator   | Project Director                             | September 2007               |
| Convene steering committee   | Project Coordinator                          | Bi-monthly through project   |
| Convene project management team  | Project Coordinator                          | Bi-weekly throughout project |
| Set up endowment management and ongoing reporting  | Community Foundation                         | Ongoing throughout project   |
| Written and 3D plans of the Playscape  | Project Director and Civil Engineer          | December 2007                |

| <b>Endowment<br/>\$268,000</b>   |   |  |
|--|---|--|
| <b>Activity</b>  | <b>Responsible</b>                                  | <b>Timeline</b>                                |
| Design and complete marketing materials  | Endowment Advisory Committee                        | October 2007                                   |
| Secure written endorsements from all departments of county and city government and civic leaders | Endowment Advisory Committee                        | October 2007                                   |
| Develop and implement a gift table   | Endowment Advisory Committee                        | October 2007                                   |
| Press conference to “kick off” endowment campaign.   | Endowment Advisory Committee                        | Upon announcement of award and in October 2007 |
| Paid advertisements.   | Project Coordinator                                 | Schedule based on available dollars            |
| Mail/Email solicitation to donor lists provided by partners and other contributing entities.     | Project Coordinator                                 | Through March 2009                             |
| Mail/Email project update letters:   | Project Coordinator                                 | Quarterly through March 2009                   |
| Planned giving promotion   | Endowment Advisory Committee                        | Spring 2008<br>Fall 2008                       |
| Individual contacts with targeted corporation.   | All partners driven by Endowment Advisory Committee | Ongoing through March 2009                     |
| Use all available media to communicate endowment availability.                                   | All partners driven by Endowment Advisory Committee | Ongoing through March 2009                     |
| Donor recognition wall in place  | Project Coordinator                                 | March 2009                                     |